

==== Shimadzu LabSolutions Analysis Report =====

Sample Name : HD_GL_141024_N_600_8
 Sample ID :
 Data Filename : HD_GL_141024_N_600_8_20241014_DN_HD_GL_N_600_SFB_B_ST1_0.8 mL_45 m
 Method Filename : SFB_B_ST1_0.8 mL_45 min_Start.lcm
 Batch Filename : 20241014_DN_HD_GL_N_600.lcb
 Vial # : 1-45
 Injection Volume : 10 uL
 Date Acquired : 10/15/2024 12:16:16 AM
 Date Processed : 10/15/2024 1:01:17 AM

Sample Type : Unknown
 Acquired by : System Administrator
 Processed by : System Administrator

<Method>

<<Header>>

Generated : 4/24/2024 3:47:23 PM
 GeneratedBy : System Administrator
 Modified : 10/14/2024 5:09:01 PM
 ModifiedBy : System Administrator

<<System Controller>>

Model : SCL-40
 Event1 : Off
 Event2 : Off
 Sample Load Timing : Off

<<Data Acquisition>>

LC Stop Time : 45.00 min
 Detector A Name : Detector A
 Detector A Sampling Frequency : 2 Hz
 Detector A Start Time : 0.00 min
 Detector A End Time : 45.00 min

<<Pump>>

Mode : Isocratic flow
 Pump A : LC-40D
 Pump A Flow/Pressure : Flow
 Pump System A Flow : 0.8000 mL/min
 Pump System A Flow Slope : 20.00 min
 Pump A PressMax : 90 bar
 Pump A PressMin : 0 bar
 Pump A Valve Model : Switching Valve
 Pump A Valve : B
 Pump A Compressibility Setting : On
 Pump A Mobile Phase Settings : 0.45 /GPa

<<Autosampler>>

Autosampler Model : SIL-40
 Enable Autosampler : Use
 Rinse Type : External only
 Specify Plate : Off
 Rinsing Volume : 500 uL
 Cut Off Loop : Off
 Specify Needle Stroke : Off
 Rinsing Speed : 35 uL/sec
 Sampling Speed : 5.0 uL/sec
 Rinse Port R0 Purge Time : 2.0 min
 Measuring Line Purge Time : 5.0 min
 Rinse Mode : Before and after aspiration
 Rinse Dip Time : 0 sec
 Measuring Line Purge Volume : 100 uL
 Air Gap Volume : Off
 Rinse Port Liquid : R0

<<Sample Pretreatment>>

Mode : Standard

<<Oven>>

Oven Model : CTO-40C
 Enable Oven : Use
 Oven Temperature : 25 C
 Maximum Temperature : 105 C

Check %Dev(Standard) : No
 Check Accuracy[%](Standard) : No
 Check %Dev(Control) : No
 Check Accuracy[%](Control) : No
 Check %Dev(Additive) : No
 Check Accuracy[%](Additive) : No
 Check %Dev(Unknown) : No
 Check Accuracy[%](Unknown) : No
 Check Quantitation Limit : No
 Check Detect Limit : No

<<Compound Table>>

<Detector A>

ID# : 1
 Name : Methanol
 Type : Target
 Channel : Ch1
 Retention Time : 14.400 min
 Retention Index : 0
 Concentration : [1]=3.016738 [2]=1.049395 [3]=0.4943277
 [4]=0.2893701 [5]=0.1127578 [6]=0.06136267
 [7]=0.01619725 [8]=3.016738 [9]=1.049395
 [10]=0.4943277 [11]=0.2893701 [12]=0.1127578
 [13]=0.06136267 [14]=0.01619725
 Peak Selection : Default(Closest Peak)
 Calculated by : Default(Area)
 Curve Fit Type : Default(Linear)
 Zero : Default(Not Forced)
 Weight : Default(None)
 Window/Band : Default(Window)
 Spiked : 0.000
 1st Coefficient : 4.720087e+005
 Intersection : 1.693726e+003
 Correction Factor : 1.000000
 Standard concentration factor : 1.000000

ID# : 2
 Name : Glycerin
 Type : Target
 Channel : Ch1
 Retention Time : 10.000 min
 Retention Index : 0
 Concentration : [1]=2.958375 [2]=1.078646 [3]=0.5353454
 [4]=0.3066948 [5]=0.114594 [6]=0.05901699
 [7]=0.0117174 [8]=2.958375 [9]=1.078646
 [10]=0.5353454 [11]=0.3066948 [12]=0.114594
 [13]=0.05901699 [14]=0.0117174
 Peak Selection : Default(Closest Peak)
 Calculated by : Default(Area)
 Curve Fit Type : Default(Linear)
 Zero : Default(Not Forced)
 Weight : Default(None)
 Window/Band : Default(Window)
 Spiked : 0.000
 1st Coefficient : 7.326784e+006
 Intersection : 2.573900e+005
 Correction Factor : 1.000000
 Standard concentration factor : 1.000000

ID# : 3
 Name : n-Propanol
 Type : Target
 Channel : Ch1
 Retention Time : 20.000 min
 Retention Index : 0
 Concentration : [1]=3.02526 [2]=1.092217 [3]=0.5139845
 [4]=0.3105323 [5]=0.09785473 [6]=0.04497364
 [7]=0.01087275 [8]=3.02526 [9]=1.092217
 [10]=0.5139845 [11]=0.3105323 [12]=0.09785473
 [13]=0.04497364 [14]=0.01087275
 Peak Selection : Default(Closest Peak)
 Calculated by : Default(Area)
 Curve Fit Type : Default(Linear)
 Zero : Default(Not Forced)
 Weight : Default(None)
 Window/Band : Default(Window)
 Spiked : 0.000
 1st Coefficient : 3.955755e+006
 Intersection : -2.585461e+004

Correction Factor : 1.000000
 Standard concentration factor : 1.000000

ID# : 4
 Name : 1,2 Propandiol
 Type : Target
 Channel : Ch1
 Retention Time : 12.400 min
 Retention Index : 0
 Concentration : [1]=2.977546 [2]=1.016412 [3]=0.5030017
 [4]=0.3027638 [5]=0.1023958 [6]=0.04970167
 [7]=0.01157971 [8]=2.977546 [9]=1.016412
 [10]=0.5030017 [11]=0.3027638 [12]=0.1023958
 [13]=0.04970167 [14]=0.01157971

Peak Selection : Default(Closest Peak)
 Calculated by : Default(Area)
 Curve Fit Type : Default(Linear)
 Zero : Default(Not Forced)
 Weight : Default(None)
 Window/Band : Default(Window)
 Spiked : 0.000
 1st Coefficient : 5.771075e+006
 Intersection : 6.007717e+004
 Correction Factor : 1.000000
 Standard concentration factor : 1.000000

ID# : 5
 Name : 1,3 Propandiol
 Type : Target
 Channel : Ch1
 Retention Time : 13.000 min
 Retention Index : 0
 Concentration : [1]=2.976375 [2]=0.9968958 [3]=0.4990984
 [4]=0.2900131 [5]=0.10734 [6]=0.04944145
 [7]=0.0100184 [8]=2.976375 [9]=0.9968958
 [10]=0.4990984 [11]=0.2900131 [12]=0.10734
 [13]=0.04944145 [14]=0.0100184

Peak Selection : Default(Closest Peak)
 Calculated by : Default(Area)
 Curve Fit Type : Default(Linear)
 Zero : Default(Not Forced)
 Weight : Default(None)
 Window/Band : Default(Window)
 Spiked : 0.000
 1st Coefficient : 5.532080e+006
 Intersection : 6.014722e+004
 Correction Factor : 1.000000
 Standard concentration factor : 1.000000

ID# : 6
 Name : iso-Propanol
 Type : Target
 Channel : Ch1
 Retention Time : 16.825 min
 Retention Index : 0
 Concentration : [1]=3.03666 [2]=1.003405 [3]=0.5418687
 [4]=0.3101858 [5]=0.1067771 [6]=0.04972951
 [7]=0.01397083 [8]=3.03666 [9]=1.003405
 [10]=0.5418687 [11]=0.3101858 [12]=0.1067771
 [13]=0.04972951 [14]=0.01397083

Peak Selection : Default(Closest Peak)
 Calculated by : Default(Area)
 Curve Fit Type : Default(Linear)
 Zero : Default(Not Forced)
 Weight : Default(None)
 Window/Band : Default(Window)
 Spiked : 0.000
 1st Coefficient : 3.797216e+006
 Intersection : -2.284739e+004
 Correction Factor : 1.000000
 Standard concentration factor : 1.000000

ID# : 7
 Name : Hydroxyacetone
 Type : Target
 Channel : Ch1
 Retention Time : 13.300 min
 Retention Index : 0
 Concentration : [1]=2.855514 [2]=0.9609004 [3]=0.4875675

	[4]=0.3072624	[5]=0.1038742	[6]=0.04860286
	[7]=0.009361501	[8]=2.855514	[9]=0.9609004
	[10]=0.4875675	[11]=0.3072624	[12]=0.1038742
	[13]=0.04860286	[14]=0.009361501	
Peak Selection	: Default(Closest Peak)		
Calculated by	: Default(Area)		
Curve Fit Type	: Default(Linear)		
Zero	: Default(Not Forced)		
Weight	: Default(None)		
Window/Band	: Default(Window)		
Spiked	: 0.000		
1st Coefficient	: 4.865699e+006		
Intersection	: 5.855022e+004		
Correction Factor	: 1.000000		
Standard concentration factor	: 1.000000		

ID#	: 8		
Name	: Ethylenglykol		
Type	: Target		
Channel	: Ch1		
Retention Time	: 12.200 min		
Retention Index	: 0		
Concentration	[1]=2.933794	[2]=1.030353	[3]=0.4898163
	[4]=0.3033639	[5]=0.09840986	[6]=0.059971
	[7]=0.01068632	[8]=2.933794	[9]=1.030353
	[10]=0.4898163	[11]=0.3033639	[12]=0.09840986
	[13]=0.059971	[14]=0.01068632	
Peak Selection	: Default(Closest Peak)		
Calculated by	: Default(Area)		
Curve Fit Type	: Default(Linear)		
Zero	: Default(Not Forced)		
Weight	: Default(None)		
Window/Band	: Default(Window)		
Spiked	: 0.000		
1st Coefficient	: 4.284813e+006		
Intersection	: 4.449721e+003		
Correction Factor	: 1.000000		
Standard concentration factor	: 1.000000		

ID#	: 9		
Name	: Ethanol		
Type	: Target		
Channel	: Ch1		
Retention Time	: 16.000 min		
Retention Index	: 0		
Concentration	[1]=3.010594	[2]=1.02339	[3]=0.5257763
	[4]=0.2939754	[5]=0.0961865	[6]=0.04960971
	[7]=0.01299818	[8]=3.010594	[9]=1.02339
	[10]=0.5257763	[11]=0.2939754	[12]=0.0961865
	[13]=0.04960971	[14]=0.01299818	
Peak Selection	: Default(Closest Peak)		
Calculated by	: Default(Area)		
Curve Fit Type	: Default(Linear)		
Zero	: Default(Not Forced)		
Weight	: Default(None)		
Window/Band	: Default(Window)		
Spiked	: 0.000		
1st Coefficient	: 2.109543e+006		
Intersection	: -9.590194e+003		
Correction Factor	: 1.000000		
Standard concentration factor	: 1.000000		

ID#	: 10		
Name	: Propionsäure		
Type	: Target		
Channel	: Ch1		
Retention Time	: 13.600 min		
Retention Index	: 0		
Concentration	[1]=2.962704	[2]=0.9915078	[3]=0.5019324
	[4]=0.3085198	[5]=0.1036906	[6]=0.04835313
	[7]=0.01168534	[8]=2.962704	[9]=0.9915078
	[10]=0.5019324	[11]=0.3085198	[12]=0.1036906
	[13]=0.04835313	[14]=0.01168534	
Peak Selection	: Default(Closest Peak)		
Calculated by	: Default(Area)		
Curve Fit Type	: Default(Linear)		
Zero	: Default(Not Forced)		
Weight	: Default(None)		
Window/Band	: Default(Window)		

Spiked : 0.000
 1st Coefficient : 4.601450e+006
 Intersection : -1.609005e+003
 Correction Factor : 1.000000
 Standard concentration factor : 1.000000

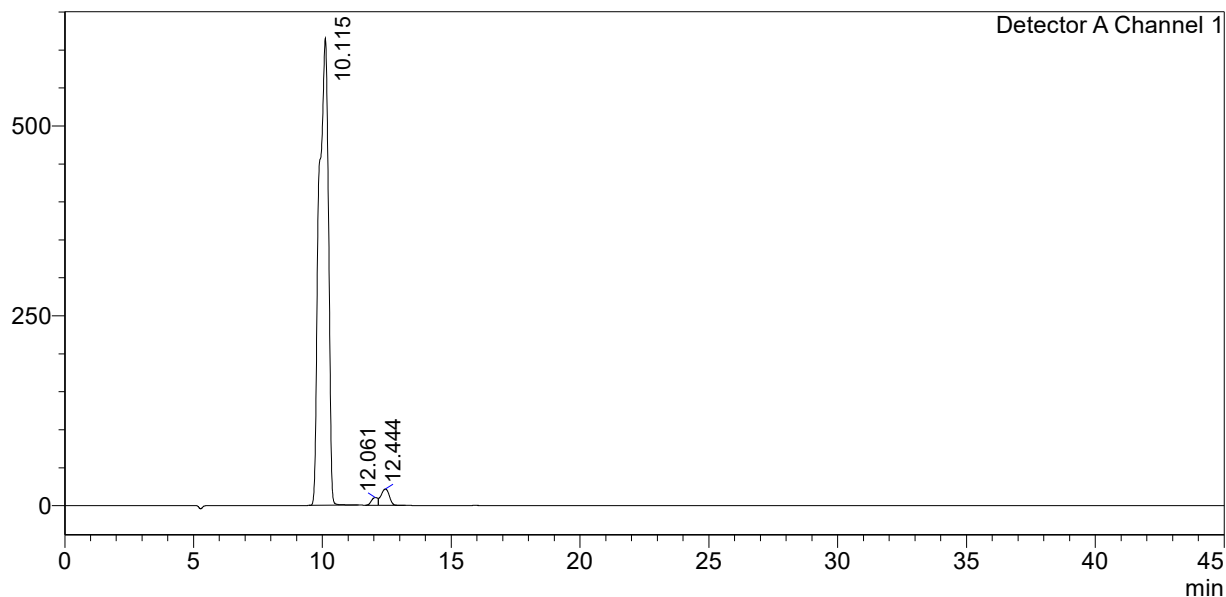
<<Column Performance>>

<Detector A>

Calculation Method : USP
 Unretained Peak Time : Time at 1st Peak
 Column Length : 150 mm
 Calculate Identified Peaks Only : Off
 Calculation of Relative Retention Time : Off

<Chromatogram>

mV



<Peak Table>

Detector A Channel 1

Peak#	Ret. Time	Area	Height	Conc.	Unit	Mark	Name
1	10.115	15532657	615383	2.085	mol/L		Glycerin
2	12.061	175011	10113	0.040	mol/L		Ethylenglykol
3	12.444	479532	21441	0.073	mol/L	V	1,2 Propandiol
Total		16187199	646938				